








ROADIAN CT8



inch	 Size	Speed Symbol & Load Index	Code	Ply	Max Psi	 Max. Load				Rim		 Section Width		 Overall Diameter		 Tread Depth		SLsR.	S/W	E Mark	Mud Snow	OE	
						lbs		kgs		Measuring	Approved	mm	inch	mm	inch	mm	/32"						mm
						S	D	S	D														
16 inch	225/60R16C	105/103T	13812	6	54	2,039	1,929	925	875	6.5	6.5-7.5	228	9.0	676	26.6	8.7	11.0/32	308	BS	E			
	215/60R16C	103/101T	13797	6	54	1,929	1,819	875	825	6.5	6.0-7.0	221	8.7	664	26.1	8.7	11.0/32	304	BS	E			
	215/60R16C	108/106T	13798	8	69	2,205	2,094	1,000	950	6.5	6.0-7.0	221	8.7	664	26.1	8.7	11.0/32	304	BS	E			
	195/60R16C	99/97H	13792	6	54	1,709	1,609	775	730	6.0	5.5-6.5	201	7.9	640	25.2	8.7	11.0/32	294	BS	E			
	235/65R16C	115/113R	13802	8	69	2,679	2,535	1,215	1,150	7.0	6.5-7.5	240	9.4	712	28.0	8.7	11.0/32	322	BS	E			
	215/65R16C	109/107T	13799	8	69	2,271	2,149	1,030	975	6.5	6.0-7.0	221	8.7	686	27.0	8.7	11.0/32	312	BS	E			
	205/65R16C	107/105T	13794	8	69	2,149	2,039	975	925	6.0	5.5-6.5	209	8.2	672	26.5	8.7	11.0/32	307	BS	E			
	195/65R16C	104/102R	13793	8	69	1,984	1,874	900	850	6.0	5.5-6.0	201	7.9	660	26.0	8.7	11.0/32	302	BS	E			
	225/75R16C	121/120S	13801	10	83	3,197	3,086	1,450	1,400	6.0	6.0-7.0	223	8.8	744	29.3	9.5	12.0/32	335	BS	E			
	LT225/75R16	115/112R	13427	10	80	2,680	2,470	1,215	1,120	6.0	6.0-7.0	223	8.8	744	29.3	11.6	15.0/32	335	BS		M+S	RAM PROMASTER	
	215/75R16C	116/114R	13800	10	76	2,756	2,601	1,250	1,180	6.0	5.5-7.0	216	8.5	728	28.7	9.1	11.5/32	329	BS	E			
	205/75R16C	113/111R	13795	10	76	2,535	2,403	1,150	1,090	5.5	5.5-6.5	203	8.0	714	28.1	9.1	11.5/32	323	BS	E			
	195/75R16C	110/108T	13783	8	76	2,337	2,205	1,060	1,000	5.5	5.0-6.0	196	7.7	698	27.5	9.5	12.0/32	317	BS	E			
	185/75R16C	104/102T	13791	8	69	1,984	1,874	900	850	5.0	5.0-6.0	184	7.2	684	26.9	8.7	11.0/32	311	BS	E			
	175/75R16C	101/99R	13790	8	69	1,819	1,709	825	775	5.0	4.5-5.5	177	7.0	668	26.3	8.7	11.0/32	305	BS	E			
205R16C	110/108T	13796	8	65	2,337	2,205	1,060	1,000	5.5	5.5-6.5	208	8.2	736	29.0	9.1	11.5/32	332	BS	E				
15 inch	205/65R15C	102/100S	13811	6	54	1,874	1,764	850	800	6.0	5.5-6.5	209	8.2	647	25.5	8.7	11.0/32	294	BS	E			
	225/70R15C	112/110T	13786	8	65	2,469	2,337	1,120	1,060	6.5	6.0-7.0	228	9.0	697	27.4	9.1	11.5/32	314	BS	E			
	215/70R15C	109/107T	13785	8	65	2,271	2,149	1,030	975	6.5	5.5-7.0	221	8.7	683	26.9	10.0	12.6/32	308	BS	E			
	215/70R15C	109S	14165	8	65	2,271	2,150	1,030	975	6.5	5.5-7.0	221	8.7	683	26.9	9.8	12.0/32	308	BS	E		FIAT DUCATO	
	205/70R15C	106/104T	13784	8	65	2,094	1,984	950	900	6.0	5.5-6.5	209	8.2	669	26.3	9.1	11.5/32	303	BS	E			
	195/70R15C	104/102T	13782	8	65	1,984	1,874	900	850	6.0	5.0-6.0	201	7.9	655	25.8	9.1	11.5/32	297	BS	E			
	205/75R15C	110/108R	14733	8	69	2,337	2,205	1,060	1,000	5.5	5.5-6.5	203	8.0	689	27.1	9.1	11.5/32	314	BS	E			
	195/80R15LT	107/105L	13814	8	65	2,150	2,039	975	925	5.5	5.0-6.0	196	7.7	693	27.3	9.1	11.5/32	312	BS	E			
	195R15C	106/104R	14506	8	65	2,095	1,985	950	900	5.5	5.0-6.0	198	7.8	690	27.2	9.6	12.1/32	314	BS	E			
	195R15C	106/104R	13283	8	65	2,095	1,985	950	900	5.5	5.0-6.5	198	7.8	691	27.2	9.6	12.0/32	311	BS	E		HYUNDAI PORTER	
	185R15C	103/102R	13813	8	65	1,929	1,874	875	850	5.0	5.0-6.0	188	7.4	674	26.5	8.7	11.0/32	305	BS	E			
	175/65R14C	90/88T	13789	6	54	1,323	1,235	600	560	5.0	5.0-5.5	177	7.0	584	23.0	8.7	11.0/32	267	BS	E			
	175/70R14C	95/93T	13809	6	54	1,521	1,433	690	650	5.0	4.5-5.5	177	7.0	602	23.7	8.3	10.5/32	274	BS	E			
	165/70R14C	89/87R	13788	6	54	1,279	1,202	580	545	5.0	4.5-5.0	170	6.7	588	23.1	7.9	10.0/32	268	BS	E			
	14 inch	215/75R14C	112/110T	13808	8	69	2,469	2,337	1,120	1,060	6.0	5.5-7.0	216	8.5	678	26.7	8.7	11.0/32	303	BS	E		
205/75R14C		109/107R	14731	8	69	2,271	2,149	1,030	975	5.5	5.5-6.5	203	8.0	664	26.1	8.7	11.0/32	301	BS	E			
185/75R14C		102/100Q	13810	8	69	1,874	1,764	850	800	5.0	5.0-6.0	184	7.2	634	25.0	8.3	10.5/32	286	BS	E			
205R14C		109/107T	13807	8	65	2,271	2,150	1,030	975	5.5	5.5-6.5	208	8.2	686	27.0	8.7	11.0/32	307	BS	E			
195R14C		106/104R	13780	8	65	2,094	1,984	950	900	5.5	5.0-6.0	198	7.8	666	26.2	8.7	11.0/32	299	BS	E			
195/R14C		106/104R	14504	8	65	2,094	1,984	950	900	5.5	5.0-6.0	198	7.8	666	26.2	8.7	11.0/32	302	BS	E			
195/R14C		102/100R	14505	6	54	1,874	1,764	850	800	5.5	5.0-6.0	198	7.8	666	26.2	8.7	11.0/32	302	BS	E			
185R14C		102/100T	13781	8	65	1,874	1,764	850	800	5.0	5.0-6.0	188	7.4	650	25.6	8.3	10.5/32	293	BS	E			
185/R14C		99/97P	14503	6	54	1,709	1,609	775	730	5.5	5.0-6.0	188	7.4	650	25.6	8.3	10.5/32	295	BS	E			
165/70R13C		88/86R	13787	6	54	1,235	1,168	560	530	5.0	4.5-5.0	170	6.7	562	22.1	7.9	10.0/32	255	BS	E			
165R13C		91/89R	13806	6	54	1,356	1,279	615	580	4.5	4.0-5.0	167	6.6	596	23.5	7.9	10.0/32	269	BS	E			
155R13C		85/83R	13779	6	51	1,135	1,074	515	487	4.5	4.0-5.0	157	6.2	578	22.8	7.9	10.0/32	262	BS	E			
145/R13C		91/89R	14732	10	80	1,356	1,279	615	580	4.0	3.5-4.5, 4.5JK, 4.5K	147	5.8	566	22.3	7.9	10.0/32	259	BS	E			

These data can be changed by the manufacturer without prior notice, and differentiated by regions.

Original Equipment



NEXEN NEXEN TIRE www.nexentire.com

Sales Headquarter 3-4FL. NEXEN BLDG. 796-27 BANGBAE-DONG, SEOCHO-GU, SEOUL, KOREA ZIP CODE: 137-060 TEL. 82-2-3476-2782 FAX. 82-2-3476-2205-6

Economical tire

with improved fuel efficiency and durability

ROADIAN CT8 KEY PERFORMANCE

01

Durability & Long Mileage

02

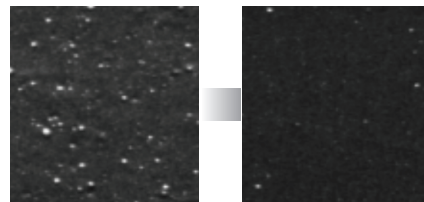
Fuel efficiency

03

Handling & Braking

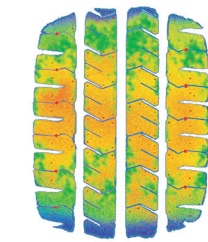
01. Durability & Long Mileage

New compound to reduce energy loss



Compound with excellent wear-resistance

Optimized dispersion of compound improves wear-resistance and reduces energy loss, which results in longer tread life.



Excellent even grip force leads to longer tread life.

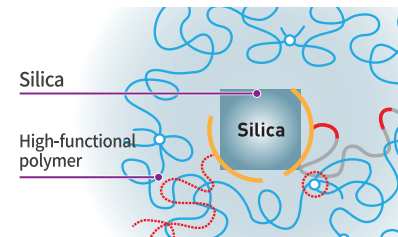


Sidewall protection from curb damage

4 side-wall shields provide outstanding resistance to damage such as external impacts and curb stones.

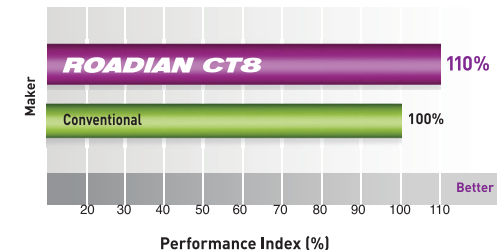
02. Fuel efficiency

New compound to reduce energy loss



Improved fuel efficiency with decreased rolling resistance, thanks to the use of optimal compound

Fuel efficiency

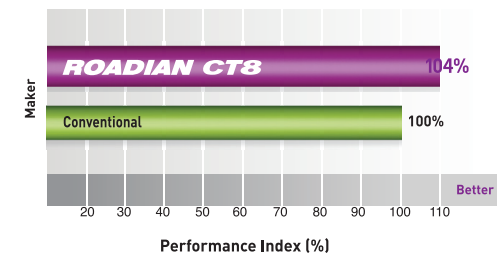


03. Handling & Braking



Improved handling performance and excellent wet grip resulting in a 4% increase in braking performance over earlier models

Braking Performance



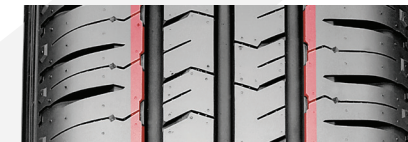
ROADIAN CT8



Pattern Design & Construction

Rib Type Shoulder Construction

Maximizes strength through a Rib Type construction on the shoulder block to endure higher loads.



Straight Groove

Improved hydro performance enables better drainage against existing zigzag pattern.



Square Dimple

Dispersion of Block stress by applying Square Dimple for improved durability.



Bite Edge

Improves Traction by applying the "Bite Edge" on the groove.



Endless, High Strength Cap Ply

Newly adopted optimized carcass contour system (OCCS) offers greater robustness by minimizing tire deformation during high speed driving.

OCCS Optimized Carcass Contour System

High Tensile Steel Belts

Groove skid depth optimization design delivers enhanced stud performance (prevents ice and pin separation).

Shock-Absorbing Sidewall

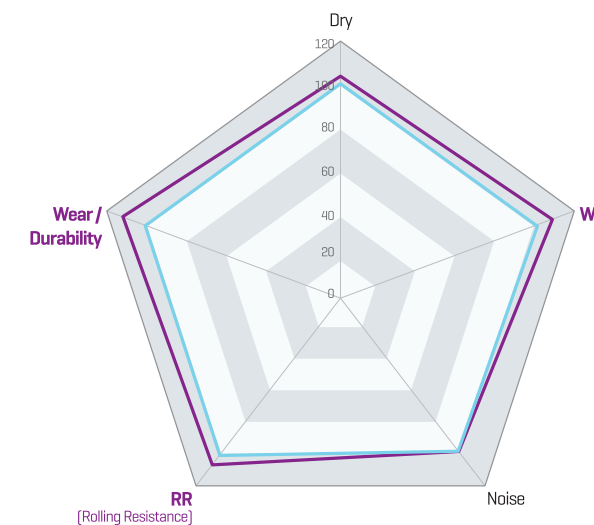
Enhanced braking function with OBCS technology for optimized grip pressure and stress dispersion.

OBCS Optimized Best Contour System

High Modulus Carcass

Better driving stability and greater robustness achieved with a new protector that prevents damage to sides in bumpy road conditions.

Target Performance Radar Chart



ROADIAN CT8

- Enhanced durability & longer tread life
- Improved fuel efficiency with decreased rolling resistance
- Excellent handling and braking performance on wet roads

ROADIAN CT8
CONVENTIONAL

NEXEN NEXEN TIRE