










ROADIAN HTX^{RH5}



Inch	Code		Size	PR	 MAX. LOAD				 Rim		 Section Width		 Overall Diameter		 Tread Depth		 SLR. S/W		UTQG			E Mark	Mud + Snow	
					lbs		kgs																	
					S	D	S	D	Measuring	Approved	mm	inch	mm	inch	mm	/32"	mm	Wear	Trac.	Temp.	E	M+S		
20 inch	13145	*	275/55R 20	113 T	4	2535	1150	8.5	7.5 ~ 9.5	284	11.2	810	31.9	9.5	12/32	372	BS	640	A	A		M+S		
	13144	*	275/60R 20	115 S	4	2679	1215	8.0	7.5 ~ 9.5	279	11.0	838	33.0	9.5	12/32	383	BS	640	A	A		M+S		
18 inch	13374	*	255/55R 18 XL	109 V	4	2271	1030	8.0	7.0 ~ 9.0	265	10.4	737	29.0	9.5	12/32	338	BS	640	A	A		M+S		
	13372	*	235/55R 18 XL	104 V	4	1984	900	7.5	6.5 ~ 8.5	245	9.6	715	28.1	8.7	11/32	330	BS	640	A	A		M+S		
	13147	*	265/60R 18	110 H	4	2337	1060	8.0	7.5 ~ 9.5	272	10.7	775	30.5	9.5	12/32	353	BS	640	A	A		M+S		
	13140	*	245/60R 18	105 H	4	2039	925	7.0	7.0 ~ 8.5	248	9.8	751	29.6	8.7	11/32	344	BS	640	A	A		M+S		
	13136	*	235/60R 18	103 V	4	1929	875	7.0	6.5 ~ 8.5	240	9.4	739	29.1	8.7	11/32	339	BS	640	A	A		M+S		
	11720	*	275/65R 18	116 T	4	2756	1250	8.0	7.5 ~ 9.5	279	11.0	815	32.1	9.5	12/32	369	BS	640	A	A		M+S		
	13139	*	265/65R 18	114 S	4	2601	1180	8.0	7.5 ~ 9.5	272	10.7	801	31.5	9.5	12/32	363	BS	640	A	A		M+S		
	12696		255/65R 18	111 T	4	2403	1090	7.5	7.0 ~ 9.0	260	10.2	789	31.1	9.5	12/32	359	BS	640	A	A	E	M+S		
	13135	*	235/65R 18	106 H	4	2094	950	7.0	6.5 ~ 8.5	240	9.4	763	30.0	8.7	11/32	348	BS	640	A	A		M+S		
	13134	*	255/70R 18	113 T	4	2535	1150	7.5	6.5 ~ 8.5	260	10.2	815	32.1	9.5	12/32	369	BS	640	A	A		M+S		
17 inch	13141	*	265/65R 17	112 H	4	2469	1120	8.0	7.5 ~ 9.5	272	10.7	776	30.6	9.5	12/32	351	BS	640	A	A		M+S		
	13143	*	255/65R 17	110 S	4	2337	1060	7.5	7.0 ~ 9.0	260	10.2	764	30.1	9.5	12/32	346	WS	640	A	A		M+S		
	11724	*	245/65R 17	107 H	4	2149	975	7.0	7.0 ~ 8.5	248	9.8	750	29.5	8.7	11/32	341	WS	640	A	A		M+S		
	13210	*	245/65R 17	107 H	4	2149	975	7.0	7.0 ~ 8.5	248	9.8	750	29.5	8.7	11/32	341	BS	640	A	A		M+S		
	11712	*	235/65R 17	104 H	4	1984	900	7.0	6.5 ~ 8.5	240	9.4	738	29.1	8.7	11/32	336	BS	640	A	A		M+S		
	13131	*	225/65R 17	102 H	4	1874	850	6.5	6.0 ~ 8.0	228	9.0	724	28.5	8.7	11/32	330	BS	640	A	A		M+S		
	12812	*	LT265/70R 17	121/118 R	10	3195	2910	1450	1320	8.0	7.0 ~ 8.5	272	10.7	804	31.7	10.7	13.5/32	362	WS	-	-	-	M+S	
	11730		265/70R 17	115 T	4	2679	1215	8.0	7.0 ~ 9.0	272	10.7	804	31.7	9.5	12/32	362	WS	640	A	A	E	M+S		
	11740		255/70R 17	112 T	4	2469	1120	7.5	6.5 ~ 8.5	260	10.2	790	31.1	9.5	12/32	356	WS	640	A	A	E	M+S		
	11729	*	245/70R 17	110 T	4	2337	1060	7.0	6.5 ~ 8.0	248	9.8	776	30.6	9.5	12/32	351	WS	640	A	A		M+S		
16 inch	13142	*	235/70R 17 XL	111 T	4	2403	1090	7.0	6.0 ~ 8.0	240	9.4	762	30.0	9.5	12/32	345	WS	640	A	A		M+S		
	11855	*	LT245/75R 17	121/118 S	10	3195	2910	1450	1320	7.0	6.5 ~ 7.5	248	9.8	800	31.5	10.7	13.5/32	360	BS	-	-	-	M+S	
	12684		LT235/80R 17	120/117 R	10	3085	2835	1400	1285	6.5	6.0 ~ 7.5	235	9.3	808	31.8	10.7	13.5/32	363	WS	-	-	-	E	M+S
	12695		255/65R 16	109 H	4	2271	1030	7.5	7.0 ~ 9.0	260	10.2	738	29.1	9.5	12/32	332	WS	640	A	A	E	M+S		
	13212	*	255/65R 16	109 H	4	2271	1030	7.5	7.0 ~ 9.0	260	10.2	738	29.1	9.5	12/32	332	BS	640	A	A		M+S		
	12693		235/65R 16	103 T	4	1929	875	7.0	6.5 ~ 8.5	240	9.4	712	28.0	8.7	11/32	322	BS	640	A	A	E	M+S		
	11716	*	265/70R 16	112 S	4	2469	1120	8.0	7.0 ~ 9.0	272	10.7	778	30.6	9.5	12/32	348	WS	640	A	A		M+S		
	11714	*	255/70R 16	111 S	4	2403	1090	7.5	6.5 ~ 8.5	260	10.2	764	30.1	9.5	12/32	343	WS	640	A	A		M+S		
	11726	*	245/70R 16	107 T	4	2149	975	7.0	6.5 ~ 8.0	248	9.8	750	29.5	9.5	12/32	337	WS	640	A	A		M+S		
	11725		235/70R 16	106 T	4	2094	950	7.0	6.0 ~ 8.0	240	9.4	736	29.0	9.5	12/32	332	WS	640	A	A	E	M+S		
15 inch	12692		225/70R 16	103 T	4	1929	875	6.5	6.0 ~ 7.5	228	9.0	722	28.4	9.5	12/32	326	WS	640	A	A	E	M+S		
	11854		LT265/75R 16	123/120 Q	10	3415	3085	1550	1400	7.5	7.0 ~ 8.0	267	10.5	804	31.7	10.7	13.5/32	358	WS	-	-	-	E	M+S
	11851		LT245/75R 16	120/116 Q	10	3042	2778	1380	1260	7.0	6.5 ~ 8.0	248	9.8	774	30.5	10.7	13.5/32	346	BS	-	-	-	E	M+S
	12685		LT225/75R 16	115/112 Q	10	2680	2470	1215	1120	6.0	6.0 ~ 7.0	223	8.8	744	29.3	10.7	13.5/32	335	BS	-	-	-	E	M+S
	13127	*	265/75R 16	116 T	4	2756	1250	7.5	7.0 ~ 9.0	267	10.5	804	31.7	9.5	12/32	358	WS	640	A	A		M+S		
	13130	*	245/75R 16	111 S	4	2403	1090	7.0	6.5 ~ 8.0	248	9.8	774	30.5	9.5	12/32	346	WS	640	A	A		M+S		
	12694		235/75R 16	108 T	4	2205	1000	6.5	6.0 ~ 8.0	235	9.3	758	29.8	9.5	12/32	340	WS	640	A	A	E	M+S		
	13133	*	225/75R 16 XL	108 S	4	2205	1000	6.0	6.0 ~ 7.5	223	8.8	744	29.3	9.5	12/32	335	WS	640	A	A		M+S		
	11859		LT235/85R 16	120/116 Q	10	3042	2778	1380	1260	6.5	6.0 ~ 7.5	235	9.3	806	31.7	10.7	13.5/32	359	BS	-	-	-	E	M+S
	11857		LT215/85R 16	115/112 Q	10	2680	2470	1215	1120	6.0	5.5 ~ 7.0	216	8.5	772	30.4	10.7	13.5/32	346	BS	-	-	-	E	M+S

※ These data can be changed by the manufacturer without prior notice, and differently applied by regions.
* Available at the 1st Quarter of 2014



NEXEN **NEXEN TIRE** www.nexentire.com

NEXEN TIRE AMERICA INC. 21073 PATHFINDER RD. STE 100, DIAMOND BAR, CA 91765 **T** 909-923-4011 **F** 909-923-3991

NEXEN TIRE CANADA INC. 140 ALLSTATE PARKWAY SUITE 500, MARKHAM, ON L3R 5Y8 CANADA **T** 905-604-4060 **F** 905-604-4070

SALES HEADQUARTER 3FL. NEXEN BLDG. 796-27 BANGBAE-DONG, SEOCHO-GU, 137-060 SEOUL, KOREA **T** 82-2-3476-2782 **F** 82-2-3476-2205~6

Driving Tomorrow

ROADIAN HTX^{RH5}

Better Driving with Silence & Good Mileage!



NEXEN TIRE



Better Driving With Silence & Good Mileage!

ROADIAN HTX_{RH5} Key Performance

01

Better Handling Performance

02

Better Wear Performance

03

Low Noise

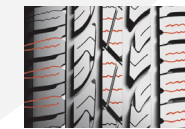
ROADIAN HTX_{RH5} SUV LTV



Pattern Design & Construction

All Weather Performance

Increased sipe density coupled with zigzag tread and sipe design yield increased all-season handling and braking performance.



Low Noise

Multi-sequenced center and shoulder ribs aid in noise reduction, increased wear protection, and drainage performance.



Wear & Handling Performance



Continuous ribs and large shoulder blocks deliver enhanced resistance to wear.

Mud Extraction Performance



Unique sipe-in-groove design improves debris extraction performance.

Endless, High Strength Cap Ply

delivers stability under high-speed driving and improves durability.

High Tensile Steel Belts

enhances braking function with optimized grip pressure and stress dispersion through

OBCS Optimized Best Contour System

Shock-Absorbable Sidewall

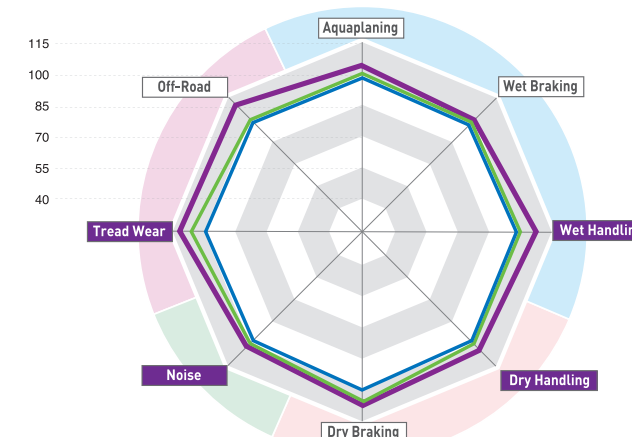
delivers a comfortable drive by absorbing vibrations from various road surfaces.

High Modulus Carcass

minimizes tire deformation and helps maintain the tire's shape to enhance driving stability with

OCCS Optimized Carcass Contour System

Performance Radar Charts



The **ROADIAN HTX_{RH5}** offers improved performance across the board. Its handling, wear and noise performance is particularly strong.

ROADIAN HTX_{RH5}
Conventional
Competitor

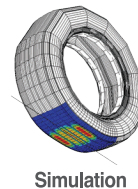
* Test Vehicle : DODGE RAM3500
* Test Size : 235/70R16, LT245/75R16
* Test Site : TVTC, LPG, RSI, STL / TTF, HighQ

01 | Better Handling Performance

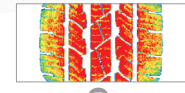
Refined block design for better handling performance

FOS Footprint Optimization Simulation

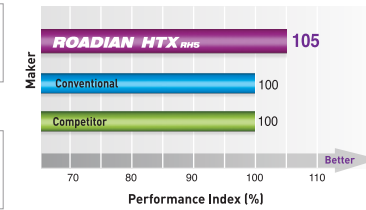
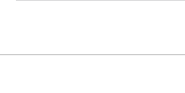
Tread design optimized by computer simulation provides uniform contact and pressure distribution resulting in increased steering stability and braking performance.



Contact pressure distribution



Profile optimization

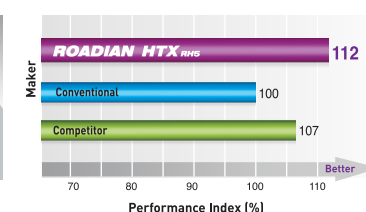
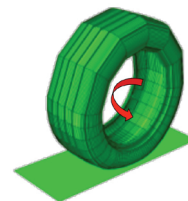


02 | Better Wear Performance

Optimized wear performance

WOS Wear Optimization Simulation

Wear resistant block design and four primary grooves work harmoniously to deliver improved drainage and extended tread life.

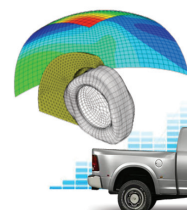


03 | Low Noise

Noise reduction technology

NOS Noise Optimization Simulation

Variable pattern block arrangements dissipate road noise and provide a hushed cabin experience.



Quiet driving realized through noise & vibration simulation

