



N FERA Primus



Inch	Size	Load Index & Speed Symbol	Code	Max. Psi	Max. Load		Rim		Section Width		Overall Diameter		Tread Depth		SLR	S/W	E Mark	Mud Snow
					kgs	lbs	Measuring	Approved	mm	inch	mm	inch	mm	/32"				
18	* 225/40ZR18	92 Y XL	16592	50	630	1,389	8.0	7.5~9.0	230	9.1	637	25.1	7.5	9.4/32	321	BS	E	
	* 245/45ZR18	100 Y XL	16606	50	800	1,764	8.0	7.5~9.0	243	9.6	677	26.7	7.5	9.4/32	347	BS	E	
17	* 245/40ZR17	95 W XL	16594	50	690	1,521	8.5	8.0~9.5	248	9.8	628	24.7	7.5	9.4/32	293	BS	E	
	* 235/40ZR17	94 W XL	16593	50	670	1,477	8.5	8.0~9.5	241	9.5	620	24.4	7.5	9.4/32	302	BS	E	
	* 215/40ZR17	87 W XL	16591	50	545	1,201	7.5	7.0~8.5	218	8.6	604	23.8	7.5	9.4/32	274	BS	E	
	* 205/40ZR17	84 W XL	16589	50	500	1,102	7.5	7.0~8.0	212	8.3	596	23.5	7.5	9.4/32	280	BS	E	
	* 245/45ZR17	99 Y XL	16605	50	775	1,709	8.0	7.5~9.0	243	9.6	652	25.7	7.5	9.4/32	302	BS	E	
	* 235/45ZR17	97 W XL	16603	50	730	1,609	8.0	7.5~9.0	236	9.3	644	25.4	7.5	9.4/32	299	BS	E	
		97 Y XL	16604	50	730	1,609	8.0	7.5~9.0	236	9.3	644	25.4	7.5	9.4/32	311	BS	E	
	* 225/45ZR17	94 Y XL	16509	50	670	1,477	7.5	7.0~8.5	225	8.9	634	25.0	7.5	9.4/32	266	BS	E	
	* 215/45ZR17	91 W XL	16601	50	615	1,356	7.0	7.0~8.0	213	8.4	626	24.6	7.5	9.4/32	304	BS	E	
	* 205/45R17	88 V XL	16598	50	560	1,235	7.0	6.5~7.5	206	8.1	616	24.3	7.5	9.4/32	288	BS	E	
		88 W XL	16599	50	560	1,235	7.0	6.5~7.5	206	8.1	616	24.3	7.5	9.4/32	288	BS	E	
	* 235/50ZR17	100 W XL	16617	50	800	1,764	7.5	6.5~8.5	245	9.6	668	26.3	7.5	9.4/32	309	BS	E	
	* 225/50R17	94 V	16614	51	670	1,477	7.0	6.0~8.0	233	9.2	658	25.9	7.5	9.4/32	317	BS	E	
		98 V XL	16615	50	750	1,653	7.0	6.0~8.0	233	9.2	658	25.9	7.5	9.4/32	317	BS	E	
	* 225/50ZR17	98 W XL	16616	50	750	1,653	7.0	6.0~8.0	233	9.2	658	25.9	7.5	9.4/32	305	BS	E	
		98 Y XL	16610	50	750	1,653	7.0	6.0~8.0	233	9.2	658	25.9	7.5	9.4/32	317	BS	E	
	* 215/50R17	95 V XL	16611	50	690	1,521	7.0	6.0~7.5	226	8.9	648	25.5	7.5	9.4/32	313	BS	E	
	* 215/50ZR17	95 W XL	16612	50	690	1,521	7.0	6.0~7.5	226	8.9	648	25.5	7.5	9.4/32	313	BS	E	
	* 205/50ZR17	93 W XL	16610	50	650	1,433	6.5	5.5~7.5	214	8.4	638	25.1	7.5	9.4/32	297	BS	E	
	* 235/55ZR17	103 W XL	16629	50	875	1,929	7.5	6.5~8.5	245	9.6	690	27.2	7.5	9.4/32	317	BS	E	
	* 225/55ZR17	101 W XL	16628	50	825	1,819	7.0	6.0~8.0	233	9.2	680	26.8	7.5	9.4/32	313	BS	E	
16	* 215/55R17	94 V	16624	51	670	1,477	7.0	6.0~7.5	226	8.9	668	26.3	7.5	9.4/32	321	BS	E	
	* 215/55ZR17	98 W XL	16625	50	750	1,653	7.0	6.0~7.5	226	8.9	668	26.3	7.5	9.4/32	321	BS	E	
	* 205/55ZR17	95 Y XL	16622	50	690	1,521	6.5	5.5~7.5	214	8.4	658	25.9	7.5	9.4/32	305	BS	E	
	* 215/40ZR16	86 W XL	16590	50	530	1,168	7.5	7.0~8.5	218	8.6	578	22.8	7.5	9.4/32	258	BS	E	
	* 225/45ZR16	93 W XL	16602	50	650	1,433	7.5	7.0~8.5	225	8.9	608	23.9	7.5	9.4/32	270	BS	E	
	* 215/45R16	90 V XL	16600	50	600	1,323	7.0	7.0~8.0	213	8.4	600	23.6	7.5	9.4/32	279	BS	E	
	* 205/45ZR16	87 W XL	16597	50	545	1,201	7.0	6.5~7.5	206	8.1	590	23.2	7.5	9.4/32	253	BS	E	
	* 195/45ZR16	84 W XL	16596	50	500	1,102	6.5	6.0~7.5	195	7.7	582	22.9	7.5	9.4/32	272	BS	E	
	* 225/50ZR16	96 W XL	16613	50	710	1,565	7.0	6.0~8.0	233	9.2	632	24.9	7.5	9.4/32	279	BS	E	
	* 205/50ZR16	87 W	16608	51	545	1,201	6.5	5.5~7.5	214	8.4	612	24.1	7.5	9.4/32	271	BS	E	
		91 W XL	16609	50	615	1,356	6.5	5.5~7.5	214	8.4	612	24.1	7.5	9.4/32	271	BS	E	
	* 185/50R16	81 V	16607	51	462	1,019	6.0	5.0~6.5	194	7.6	592	23.3	7.5	9.4/32	263	BS	E	
	* 225/55ZR16	95 W	16626	51	690	1,521	7.0	6.0~8.0	233	9.2	654	25.7	7.5	9.4/32	288	BS	E	
		99 W XL	16627	50	775	1,709	7.0	6.0~8.0	233	9.2	654	25.7	7.5	9.4/32	288	BS	E	
	* 215/55ZR16	97 W XL	16623	50	730	1,609	7.0	6.0~7.5	226	8.9	642	25.3	7.5	9.4/32	273	BS	E	
	* 205/55ZR16	91 W	16620	51	615	1,356	6.5	5.5~7.5	214	8.4	632	24.9	7.5	9.4/32	269	BS	E	
		94 W XL	16621	50	670	1,477	6.5	5.5~7.5	214	8.4	632	24.9	7.5	9.4/32	259	BS	E	
	* 195/55R16	91 V XL	16619	50	615	1,356	6.0	5.5~7.0	201	7.9	620	24.4	7.5	9.4/32	264	BS	E	
	* 185/55R16	83 V	16618	51	487	1,074	6.0	5.0~6.5	194	7.6	610	24.0	7.5	9.4/32	283	BS	E	
15	* 195/45ZR15	78 W	16595	51	425	937	6.5	6.0~7.5	195	7.7	557	21.9	7.5	9.4/32	237	BS	E	

* Available at the 1st Quarter of 2019

- Our company is entitled to make any change on any information in this catalogue, without further notice.
- All figures are for reference; our company is not responsible for printing errors.

NEXEN NEXEN TIRE www.nexentire.com

SALES HEADQUARTER NEXEN TIRE 4F 226, BANGBAE-RO, SEOCHO-GU, SEOUL, KOREA 06584 T 82-2-3476-2782

NEW PRODUCT

N FERA Primus

ULTRA HIGH PERFORMANCE SUMMER



NEXEN NEXEN TIRE

Well-Balanced Performance with Improved Wet & Dry Braking!

N FERA Primus Key Performance



01 | Enhanced Wet & Dry Braking Performance

Block Strength Enhancement Engineering

Improved Wet & Dry Braking performances with the Enhanced Strength of Center & Shoulder(out) Blocks.

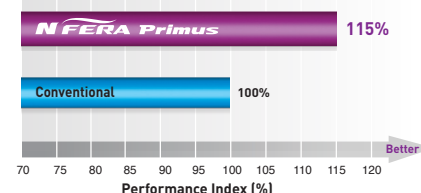
① Center Block
Rib Type Applied

② Outside Block
Strength Enhancement



③ Strong 3D Block &
Optimized Groove
Engineering

Wet Braking

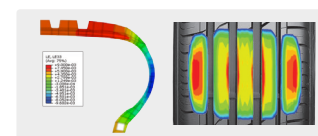


02 | Improved Handling performance

Tire Profile and Grip Optimization

Optimization of Grip and Surface Performances with Simulations.

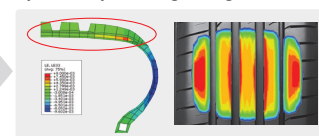
Enhanced Safety with Driving Simulations



Conventional

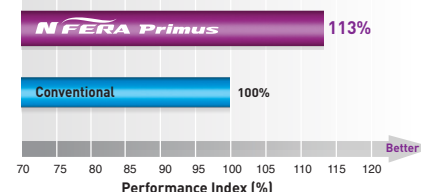
Profile
Simulation

Maximization of Grip Performance with the
Optimum Grip Force Engineering



N FERA Primus

Wet Handling

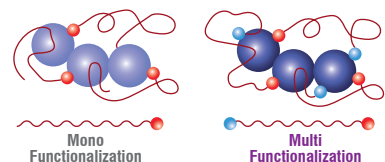


03 | Advanced Safety

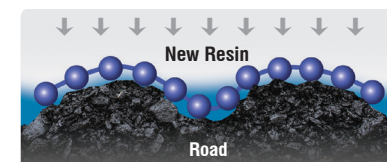
New High Silica Compound Application

Maximum Safety with the Application of New UHP Summer Compound.

New Generation Solution SBR



High Grip Resin



Hydrophilic Filler and Molecular
Properties Controlled Polymer Applied



N FERA Primus



Pattern Design & Construction

3D Lateral Grooves

Reduced Braking Distance
on Dry/Wet Roads by the
Ensured Block Strength with
the 3D Blocks Engineering.



3+1 Wide Grooves

Hydroplaning Prevented
by the Optimum Drain
Surfaces.



3 Strong Tread Ribs

Straight Movement Stability
and Instant Handling
Performances Acquired
by the Optimum Strength
Balance of Rib Center Blocks.



Wear Eye - Tread Wear Indicator



Visual Aid of Tread
Pattern Wear Condition.

Jointless Bead Wire & High Hardness Bead Filler

Acquired Safety and Handling
Performances with Better Grip of Tire and Wheel.

High Tensile Steel Belts

Enhance Braking Function with Optimized
Grip Pressure and Stress Dispersion by
OBCCS Technology.

OBCCS Optimized Best Contour System

Optimum Sidewall

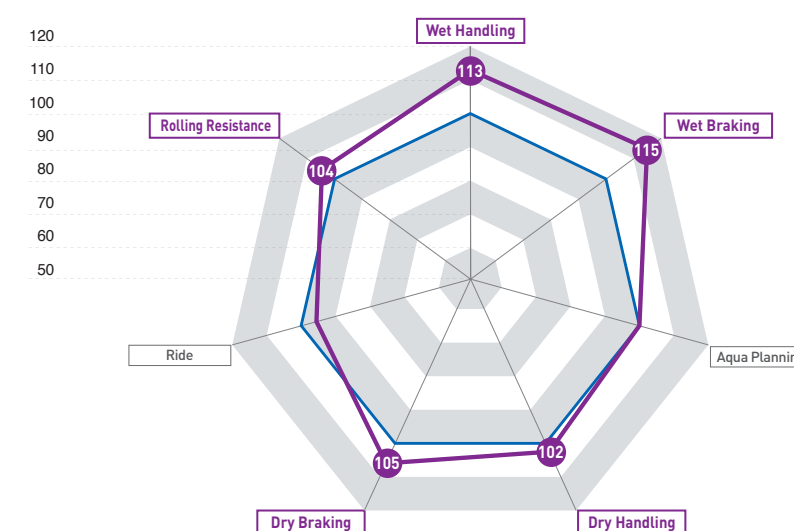
Providing Driving Comfort by Absorbing
Various Impacts from Road Surface.

High Modulus Carcass

Minimizes Tire Deformation and Helps Maintain
the Tire's Shape to Enhance Driving Stability
with OCCS Technology.

OCCS Optimized Carcass Contour System

Performance Radar Chart



N FERA Primus possesses an
exceedingly advanced handling and braking
performance, not only on the wet road,
but also on the dry road.

N FERA Primus

Conventional

NEXEN NEXEN TIRE